

YOKOSUKA CHERRY CHEESE CAKE



Restaurant TSUNAMI

レストラン TSUNAMI



Yokosuka Cherry Cheesecake and Drink Set

Walk 6 minutes from Shioiri Station.
Leisure Facility Use or Souvenir Ticket usage hours:

Weekends and Holidays 11:00 a.m. - last order 9:00 p.m. (Please check Instagram for weekday hours.)

Closed: January 1st
Iida Building 2-1-9 Hon-cho, Yokosuka-shi, Kanagawa
TEL:046-828-5273 (TSUMIBOX)



CAFE and GRILL Perry

どぶ板食堂 Perry



Yokosuka Cherry Cheesecake and Drink Set

Walk 6 minutes from Shioiri Station.
Leisure Facility Use or Souvenir Ticket usage hours:

11:00 a.m. - last order 10:00 p.m.
Open all year round.

2-19 Hon-cho, Yokosuka-shi, Kanagawa
TEL:046-807-5441



Mikasa Cafe

ミカサカフェ



Yokosuka Cherry Cheesecake and Drink Set

Walk 2 minutes from Shioiri Station.
Leisure Facility Use or Souvenir Ticket usage hours:

9:00 a.m. - last order 5:00 p.m.
Closed: Irregular Holidays.
3-33-3 Hon-cho, Yokosuka-shi, Kanagawa

TEL:046-822-3857



YOKOSUKA Shell

YOKOSUKA Shell



Yokosuka Cherry Cheesecake and Drink Set

Walk 7 minutes from Yokosuka-Chuo Station,
or walk 8 minutes from Shioiri Station.
Leisure Facility Use or Souvenir Ticket usage hours: 11:00 a.m. - last order 10:00 p.m.

Closed: Mondays (open if it is a holiday)
1-9 Hon-cho, Yokosuka-shi, Kanagawa
TEL:046-876-5467



TSUNAMI BOX

TSUNAMI BOX



Yokosuka Cherry Cheesecake and Drink Set

Walk 5 minutes from Shioiri Station.
Leisure Facility Use or Souvenir Ticket usage hours:

11:00 a.m. - last order 9:00 p.m.
Closed: January 1st
2-5-4 Hon-cho, Yokosuka-shi, Kanagawa
TEL:046-828-5273



Yokosuka gourmet fleet

よこすかグルメ艦隊



Yokosuka Cherry Cheesecake and Commodore Perry's Bakumatsu Lemonade

Walk 5 minutes from Shioiri Station.
Leisure Facility Use or Souvenir Ticket usage hours: 10:00 a.m. - 8:30 p.m.

Open all year round.
2-1-12 Hon-cho, Yokosuka-shi, Kanagawa
Coaska Bayside Stores 2nd floor
Aeon Style (sea side)
TEL:046-845-6844



Hungry's / Alfred

ハンダリーズ / アルフレッド



Yokosuka Cherry Cheesecake and Drink Set

Walk 5 minutes from Shioiri Station.
Leisure Facility Use or Souvenir Ticket usage hours:

Lunch 11:00 a.m. - last order 2:00 p.m. (Weekends and holidays only last order 3:00 p.m.),
Dinner 5:00 p.m. - last order 9:30 p.m.
Closed: Irregular holidays
2-4 Hon-cho, Yokosuka-shi, Kanagawa (Hungry's on 2nd floor, Alfred's on 1st floor)
TEL:046-807-2420



Restaurant LAUNA

レストラン LAUNA (ラウナ)



Yokosuka Cherry Cheesecake and Drink Set

Walk 10 minutes from Yokosuka-Chūō Station or Shioiri Station.
Leisure Facility Use or Souvenir Ticket usage hours: 11:00 a.m. - last order 8:00 p.m.

Closed: Mondays, 1st and 3rd Tuesdays (open if it is a holiday, closed the following day, but may be other special Closures).
1-15-11 Hon-cho, Yokosuka-shi, Kanagawa
TEL:046-854-5688



ENJOY YOKOSUKA!



Yokosuka City Tourism Information Center

横須賀市観光案内所



Yokosuka Souvenir Set

- Yokosuka Kaigun Curry Navy Blue (retort pouch)
- Yokosuka Kaigun Curry Shittori Senbei (rice crackers)
- Sukarin ballpoint pen or Sucurry file



Just outside the East Exit of Yokosuka-Chūō Station.

Leisure Facility Use or Souvenir Ticket usage hours: 9:30 a.m. - 5:00 p.m.

Closed: 12/31 - 1/3

2-25 Wakamatsu-cho, Yokosuka-shi, Kanagawa

TEL: 046-822-8301

SEA-Bike Yokosuka Chuo Station

SEA-Bike 横須賀中央ステーション



- e-Bike 2-hour use on weekdays, 1.5-hour use on weekends and holidays *Extensions possible
- Reservations required



3 minute walk from Yokosuka-Chūō Station

Leisure Facility Use or Souvenir Ticket usable from 8:00 a.m. - 5:00 p.m. (last reception, return by 7:00 p.m.)

Open all year round

ORIX Rent-A-Car Yokosuka-Chuo Ekimae Branch, 1-17-6 Wakamatsucho, Yokosuka City

TEL: 0120-605-430

*Dedicated phone number for reception. This number is different from that of the rental store.

*Make reservations through the website or by phone by 19:00 the day before your desired date.

*When making a reservation, announce that you are using the Yokosuka Mankitsu Ticket.

Marlowe Yokosuka Port Market Store

マールウ よこすかポートマーケット店



Your choice of regular pudding

- One pudding of your choice from the regular puddings, comes with a plastic spoon



11 minute walk from Yokosuka-Chūō Station

Leisure Facility Use or Souvenir Ticket usage hours: 10:00 a.m. - 6:00 p.m.

Closed when Port Market is closed

Inside Yokosuka Port Market, 6 Shinkocho, Yokosuka City, Kanagawa

TEL: 046-854-5333

BUTCHER'S TABLE, Yokosuka Matsuzakaya

BUTCHER'S TABLE 横須賀松坂屋



One sausage of your choice + pork liverwurst

- Select sausage from several varieties.



11 minute walk from Yokosuka-Chūō Station

Leisure Facility Use or Souvenir Ticket usage hours: 10:00 a.m. - 6:00 p.m.

Closed when Port Market is closed

Inside Yokosuka Port Market, 6 Shinkocho, Yokosuka City, Kanagawa

TEL: 080-7408-2911

Restaurant Materia

レストラン マテリア



- Choice of fresh pudding & drink set

11 minute walk from Yokosuka-Chūō Station

Leisure Facility Use or Souvenir Ticket usage hours:

10:00 a.m. - last order 7:00 p.m.

Closed when Port Market is closed

Inside Yokosuka Port Market, 6 Shinkocho, Yokosuka City, Kanagawa

TEL: 046-823-7388



Panpukin

ぱんぷきん



- 2 rolls of curry bread, 2 rolls of anpan bread, one petit pan (small bread)
- The number of breads is limited and other breads may be offered if we are out of stock.



Walk 1 minute from Shioiri Station.

Leisure Facility Use or Souvenir Ticket usage hours: 7:00 a.m. - 7:00 p.m.

Closed: Sundays and Holidays

2-40 Shioiri-cho, Yokosuka-shi, Kanagawa

TEL: 046-823-1133

Dobuita Station

ドブイタステーション



[April to October]

Yokosuka Souvenir Set

- Yokosuka Kaigun Curry (retort pouch)
- Dobuita original stickers (choose 1)

[November to March]

Rental of sukajan (embroidered satin varsity jacket)

*In order to prevent the spread of COVID-19, this service has been temporarily suspended. During suspension, it will be substituted with the "Yokosuka Souvenir Set".



Walk 4 minutes from Shioiri Station.

Leisure Facility Use or Souvenir Ticket usage hours: 11:00 a.m. - 3:45 p.m.

Closed: Wednesdays (open if it is a holiday)

2-7 Hon-cho, Yokosuka-shi, Kanagawa

TEL: 046-824-4917

ALEX'S SALOON

ALEX'S SALOON (アレックス サルーン)



KEIKYU x ALEX Plate (with 1 drink)

- Food on the menu changes on a daily basis.
- For your drink, choose from several varieties of beer and soft drinks.



Walk 5 minutes from Shioiri Station.

Leisure Facility Use or Souvenir Ticket usage hours: Weekdays 2:30 p.m. - last order 8:00 p.m., Weekends and

Holidays 12:30 p.m. - last order 8:00 p.m.

Open all year round.

Aloha Building 1st floor, 2-3-6 Hon-cho, Yokosuka-shi, Kanagawa

TEL: 046-876-5202

Wagashi Tsukasa Izumiya, Yokosuka Chuo Store

和菓子司いづみや 横須賀中央店



Karinto Manju

(fried dough cookie in bread) x6

Walk 3 minutes from Yokosuka-Chūō Station.

Leisure Facility Use or Souvenir Ticket usage hours: 10:00 a.m. - 5:00 p.m.

Closed: January 1st

2-23 Odaki-cho, Yokosuka-shi, Kanagawa

TEL: 046-821-0108



Memorial Ship Mikasa

世界三大記念艦「三笠」



Admission to Mikasa Historical Warship (with your choice of souvenir)

- Choose either "Guide to Mikasa" or "Mikasa Cannonball Beans & Ballpoint Pen Set"

Walk 15 minutes from Yokosuka-Chūō Station. Or, from JR Yokosuka Station, ride the Keihin Kyuko Bus Mikasa Junkan route, and get off at "Mikasa Kouen" stop.
Leisure Facility Use or Souvenir Ticket usage hours:
[April to September] Entry from 9:00 a.m. - 5:00 p.m.,
[March and October] Entry from 9:00 a.m. - 4:30 p.m.,
[November to February] Entry from 9:00 a.m. - 4:00 p.m.
Closed: December 28th to 31st
82-19 Inaoka-cho, Yokosuka-shi, Kanagawa
TEL:046-822-5225



Sarushima Welcome Center

Sarushima Welcome Center



"Investigation" tour of the uninhabited island Sarushima

- + Sarushima Island Official Guidebook

*Hand over your ticket at the Sarushima Welcome Center on the island.
To Mikasa Terminal, walk 15 minutes from Yokosuka-Chuo Station. Or, from JR Yokosuka Station, ride the Keihin Kyuko Bus Mikasa Junkan Route, and get off at "Mikasa Kouen" stop. From Mikasa Terminal, 10 minutes on the Sarushima Island Cruise.
Leisure Facility Use or Souvenir Ticket usage hours: [March 1st to January 31st] 9:50 a.m. - 3:50 p.m., [November 1st to February 28th] 9:50 a.m. - 2:50 p.m. *Departs every hour at 50 minutes. Open all year round.
Closed on days when the Sarushima Island Cruise is closed.
1 Sarushima, Yokosuka-shi, Kanagawa
TEL:046-825-7144
*Does not include the ferry fare and admission to Sarushima.
*Admission free for one elementary school student per adult.
(Elementary school student prices are charged for numbers in excess of adults.)



Single-seat electric vehicle "my-mo" Yokosuka Store, ENEOS Auto Service Shonan SS

一人乗り電気自動車「my-mo (ミューモ)」



1 hour use of "my-mo"

- Extension possible
- Number of vehicles available for rent: 2 (reservation required)

From Yokosuka-Chūō Station, take the Keihin Kyuko Bus to "Yasuura 1-chome" and walk 3 minutes, or get off at Kenritsudaigaku Station and walk 7 minutes.
Ticket usable time: 9:00 a.m. - 6:00 p.m. (Return by 8:00 p.m.). Open all year round.
2-3, Yasuuracho, Yokosuka City, Kanagawa
*Must have an ordinary vehicle license (that is valid in Japan). Always have your license with you, and follow traffic laws.
TEL:046-822-0756



Yokosuka Museum of Art

横須賀美術館



Admission to the special exhibit being held that day
● When special exhibits are being changed, and only items from the collection are on display, a souvenir will be given instead.

*Admission is free for junior high school students and younger children.

From Maborikaigan Station, ride the Keihin Kyuko Bus, and walk 2 minutes from "Kannonzaki Keikyū Hotel / Yokosuka Bijutsukan Mae" stop.
Or Uruaga Station, ride the Keihin Kyuko Bus, and walk 5 minutes from "Kannonzaki".
Leisure Facility Use or Souvenir Ticket usage hours: 10:00 a.m. - 6:00 p.m.
Closed: 1st Mondays each month (open if it is a holiday), December 29th to January 3rd, and some other special days.
4-1 Kamoi, Yokosuka-shi, Kanagawa
TEL:046-845-1211



Cool Clan Uraga

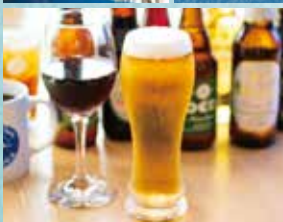
Cool Clan URAGA



A soft drink of your choice and a seaweed souvenir (kombu or wakame or hijiki)

- Alcoholic drinks are available (Some products may be excluded.)

Walk 2 minutes from Uraga Station.
Leisure Facility Use or Souvenir Ticket usage hours: 11:00 a.m. - last order 8:15 p.m.
Closed: Wednesdays
1-8-3 Uraga, Yokosuka-shi, Kanagawa
TEL:046-845-9530



Kissa Chai

喫茶 茶井



Set with Yokosuka Dog and your choice of Japanese tea (with souvenir, Hashirimizu yakinori (roasted laver seaweed) or Uji Gyokuro (high quality green tea))

- Choose your hot dog from "kombu" or "nori" (available as To Go)
- Coffee is available for the drink

Walk 2 minutes from Uraga Station.
Leisure Facility Use or Souvenir Ticket usage hours: 11:00 a.m. - last order 5:30 p.m.
Closed: Sundays and Mondays
3-1-10 Uraga, Yokosuka-shi, Kanagawa
TEL:046-841-0713



Seieiken

精栄軒



"Deai" bread or "Senkai Monaka" (bean jam filled wafers) Set of 4

- Choose one of the above snacks.

From Uraga Station, ride the Keihin Kyuko Bus, and walk 2 minutes from "Konya-cho" stop.
Leisure Facility Use or Souvenir Ticket usage hours: 10:30 a.m. - 4:00 p.m.
Closed: Mondays and Thursdays (open if it is a holiday, and closed the following day.)
1-6-16 Nishiuraga, Yokosuka-shi, Kanagawa
TEL:046-841-0123



Tokyo-Wan Ferry

東京湾フェリー



Pleasure cruise

- Cruise Time: About 2 hours
- Depart from Kurihama ▶ About 40 minutes ▶ Arrive at Kanaya (dock for about 20 minutes, cannot disembark) ▶ About 35 minutes ▶ Arrive at Kurihama port (disembark)

*Limited to 1 cruise.
*Complete the boarding process at least 20 minutes before departure.

From Keikyū Kurihama Station, ride the Keihin Kyuko Bus, and get off at "Tokyo Wan Ferry" stop.
*The service may be suspended in the event of inclement weather.
8-17-20 Kurihama, Yokosuka-shi, Kanagawa
TEL:046-835-8855



Umibe no Yu Kurihama

海辺の湯 久里浜店



Admission to the hot bath facility

- With original face towel
- With soft drink for children

From Keikyū Kurihama Station, ride the Keihin Kyuko Bus, and walk 2 minutes from "Tokyo Wan Ferry" stop.
Leisure Facility Use or Souvenir Ticket usage hours: 9:30 a.m. - 9:00 p.m. Open all year round.
8-17-23 Kurihama, Yokosuka-shi, Kanagawa
*Cannot be used with other free service, discounts, or coupons.
TEL:046-838-4126



Dessert & Cafe Blue Moon

Dessert & Cafe Blue Moon



Your choice of sampler gateau chocolat (chocolate cake) set (with coffee or black tea)

- Choose either plain or macadamia nut gateau chocolate.

Walk 9 minutes from Tsukuihama Station.
Leisure Facility Use or Souvenir Ticket usage hours: Tuesdays to Fridays 10:00 a.m. - last order 5:00 p.m., Weekends 10:00 a.m. - last order 3:00 p.m., 5:00 p.m. - last order 8:00 p.m., Holidays 10:00 a.m. - last order 5:00 p.m.
Closed: Mondays and 2nd Tuesday each month. (open if it is a holiday, and closed the following day)
1-4-7 Tsukui, Yokosuka-shi, Kanagawa
TEL:046-847-2330



Tsukuihama Tourist Farm Sweet Potato Digging

津久井浜観光農園 さつまいも掘り



[Only Saturdays, Sundays, and public holidays from the second week of September to the third week of October]

Sweet potato harvest experience

- Bags will be provided for holding harvested sweet potatoes.
- Please bring your own gloves and boots.
- Canceled in the event of rain. May continue if rain is very light.



Walk 25 minutes from Tsukuihama Station.

(A free shuttle bus from Tsukuihama Station is available on Saturdays, Sundays, and public holidays.)

Leisure Facility Use or Souvenir Ticket usage hours: [2nd Saturday in September through the 3rd Sunday in October]Weekends and Holidays 9:00 a.m. - 3:00 p.m. *

End as soon as sweet potatoes are gone.

Closed:Weekdays

5-15-20 Tsukui, Yokosuka-shi, Kanagawa

TEL:Weekdays 046-849-4506(9:00 - 15:00),Weekends and Holidays 070-2671-9614

Tsukuihama Tourist Farm Mandarin Orange Picking

津久井浜観光農園 みかん狩り



[October 20th to November 30th]
Mandarin orange harvest experience

- Eat as many as you like in the park
- With souvenir (contents vary depending on period).
- Rental scissors are provided for harvesting.
- The experience is outdoors, so the ground will be slippery in the event of rain.



Walk 20 minutes from Tsukuihama Station.

(A free shuttle bus from Tsukuihama Station is available.)

Leisure Facility Use or Souvenir Ticket usage hours: [October 20th to November 30th] 9:00 a.m. - 3:00 p.m.

5-15-20 Tsukui, Yokosuka-shi, Kanagawa

TEL:046-849-5001