

YOKOSUKA NAVY BURGER



A classic American navy style burger
Yokosuka Navy Burger

Restaurant TSUNAMI

レストラン TSUNAMI



- George Washington Burger (quarter pound) and soft drink

Walk 6 minutes from Shioiri Station.
Meal Ticket usage hours:Weekends and Holidays11:00 a.m. - last order 9:00 p.m. (Please check Instagram for weekday hours.)

Closed:January 1st
Iida Building 2-1-9 Hon-cho,
Yokosuka-shi, Kanagawa
TEL:046-828-5273 (TSUMIBOX)



HONEY BEE Main Store

HONEYBEE



- Yokosuka Navy Burger 1/2 pound (227g), soft drink and French fries

6 minutes walk from Shioiri Station.
Meal Ticket usage hours:
11:30 a.m. - last order 10:30 p.m.

Open all year round
2-1 Hon-cho, Yokosuka-shi, Kanagawa
TEL:046-825-9096



SURF TACO

サーフタコ



- George Washington Burger (quarter pound) and soft drink

Walk 4 minutes from Shiori station.
Meal Ticket usage hours:
Weekdays 5:00 p.m. - last order 10:00 p.m., Weekends and Holidays 12:00 p.m. - last order 10:00 p.m.
Closed:Irregular holidays.Please check [navyburgertsunami] Instagram for weekdays.

2-7 Hon-cho, Yokosuka-shi, Kanagawa
TEL:046-828-5273(TSUNAMI BOX)



CAFE and GRILL Perry

どぶ板食堂 Perry



- Regular burger, French fries and soft drink

Walk 6 minutes from Shioiri Station.
Meal Ticket usage hours:
11:00 a.m. - last order 10:00 p.m.

Open all year round.
2-19 Hon-cho, Yokosuka-shi,
Kanagawa
TEL:046-807-5441



TSUNAMI BOX

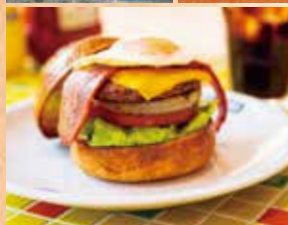
TSUNAMI BOX



- George Washington Burger (quarter pound) and soft drink

Walk 5 minutes from Shioiri Station.
Meal Ticket usage hours:
11:00 a.m. - last order 9:00 p.m.

Closed:January 1st
2-5-4 Hon-cho, Yokosuka-shi,
Kanagawa
TEL:046-828-5273



YOKOSUKA Shell

YOKOSUKA Shell



- Yokosuka Navy Burger regular(227g) and soft drink

Walk 7 minutes from Yokosuka-Chūō Station,or walk 8 minutes from Shioiri Station.

Meal Ticket usage hours:
11:00 a.m. - last order 10:00 p.m.

Closed: Mondays
(open if It is a holiday)
1-9 Hon-cho, Yokosuka-shi, Kanagawa
TEL:046-876-5467



Hungry's / Alfred

ハングリーズ/アルフレッド



- Yokosuka Navy Burger(quarter pound), Yokosuka Kaigun Curry(half size), salad and milk

Walk 5 minutes from Shioiri Station.
Meal Ticket usage hours:Lunch
11:00 a.m. - last order 2:00 p.m.

(Weekends and holidays only last order 3:00 p.m.),
Dinner 5:00 p.m. - last order 9:30 p.m.
Closed:Irregular holidays
2-4 Hon-cho, Yokosuka-shi, Kanagawa
(Hungry's on 2nd floor, Alfred's on 1st floor)
TEL:046-807-2420



Yokosuka gourmet fleet

よこすかグルメ艦隊



- Yokosuka Navy Burger(quarter pound), French fries and soft drink

Walk 5 minutes from Shioiri Station.
Meal Ticket usage hours:
10:00 p.m. - last order 8:30 p.m.

Open all year round.
2-1-12 Hon-cho, Yokosuka-shi,
Kanagawa
Coaska Bayside Stores 2nd floor Aeon Style (sea side)
TEL:046-845-6844



Restaurant LAUNA

レストラン LAUNA (ラウナ)



- Yokosuka Navy Burger and French fries

Walk 10 minutes from Yokosuka-Chūō Station or Shioiri Station.

Meal Ticket usage hours:

11:00 a.m. - last order 8:00 p.m.

Closed: Mondays, 1st and 3rd Tuesdays (open if it is a holiday, but may be other special Closures).

1-15-11 Hon-cho, Yokosuka-shi, Kanagawa

TEL:046-854-5688



HONEY BEE Yokosuka Port Market Store

HONEY BEE よこすかポートマーケット店



- Yokosuka Navy Burger 1/2 pound (227g), soft drink and French fries

11 minute walk

from Yokosuka-Chūō Station

Meal Ticket usage hours:

10:00 a.m. - last order 7:45 p.m.

Closed: January 1st and 2nd,

Port Market Closing Days

Inside Yokosuka Port Market, 6 Shinkocho, Yokosuka City Kanagawa



YOKOSUKA KAIGUN CURRY



A recreation of the Japanese navy's
curry rice recipe

Yokosuka Kaigun Curry

MIKASA CAFE

MIKASA CAFE



- Yokosuka Kaigun Curry, milk and salad

Walk 2 minutes from Shioiri Station.

Meal Ticket usage hours:

9:00 a.m. - last order 5:00 p.m.

Closed: Irregular Holidays.

3-33-3 Hon-cho, Yokosuka-shi, Kanagawa

TEL:046-822-3857



TSUNAMI BOX

TSUNAMI BOX



- Yokosuka Kaigun Curry, milk and salad

Walk 5 minutes from Shioiri Station.

Meal Ticket usage hours:

11:00 a.m. - last order 9:00 p.m.

Closed: January 1st

2-5-4 Hon-cho, Yokosuka-shi, Kanagawa

TEL:046-828-5273



Hungry's / Alfred

ハングリーズ / アルフレッド



- Yokosuka Navy Burger(quarter pound), Yokosuka Kaigun Curry(half size), salad and milk

Walk 5 minutes from Shioiri Station.

Meal Ticket usage hours:

Lunch 11:00 a.m. - last order 2:00 p.m.

(Weekends and holidays only last order 3:00 p.m.),

Dinner 5:00 p.m. - last order 9:30 p.m.

Closed: Irregular holidays

2-4 Hon-cho, Yokosuka-shi, Kanagawa

(Hungry's on 2nd floor, Alfred's on 1st floor)

TEL:046-807-2420



Restaurant TSUNAMI

レストラン TSUNAMI



- Yokosuka Kaigun Curry, milk and salad

Walk 6 minutes from Shioiri Station.
Meal Ticket usage hours:
Weekends and Holidays 11:00 a.m. - last order 9:00 p.m. (Please check Instagram for weekday hours.)
Closed: January 1st
Iida Building 2-1-9 Hon-cho, Yokosuka-shi, Kanagawa
TEL: 046-828-5273 (TSUMIBOX)



HONEY BEE Main Store

HONEYBEE



- Yokosuka Kaigun Curry, salad, milk and potato chips (topping)

6 minutes' walk from Shioiri Station.
Meal Ticket usage hours:
11:30 a.m. - last order 10:30 p.m.
Open all year round
2-1 Hon-cho, Yokosuka-shi, Kanagawa
TEL: 046-825-9096



CAFE and GRILL Perry

どぶ板食堂 Perry



- Yokosuka Kaigun Curry, salad, milk, fukujinzuke pickles, karaage fried chicken, French fries and soft drink

Walk 6 minutes from Shioiri Station.
Meal Ticket usage hours:
11:00 a.m. - last order 10:00 p.m.
Open all year round.
2-19 Hon-cho, Yokosuka-shi, Kanagawa
TEL: 046-807-5441



YOKOSUKA Shell

YOKOSUKA Shell



- Yokosuka Kaigun Curry, milk, salad, fukujinzuke pickles, karaage fried chicken, French fries and soft drink

Walk 7 minutes from Yokosuka-Chūō Station, or walk 8 minutes from Shioiri Station.
Meal Ticket usage hours:
11:00 a.m. - last order 10:00 p.m.
Closed: Mondays (open if it is a holiday)
1-9 Hon-cho, Yokosuka-shi, Kanagawa
TEL: 046-876-5467



Yokosuka Kaigun Curry Honpo bay side kitchen

横須賀海軍カレー本舗 ベイサイドキッチン



- Yokosuka Kaigun Curry, milk, salad, fukujinzuke pickles, Japanese shallot, croquette and orange

Walk 5 minutes from Shioiri Station.
Meal Ticket usage hours:
11:00 a.m. - last order 5:30 p.m.
Open all year round.
2-1-12 Hon-cho, Yokosuka-shi, Kanagawa
Coaska Bayside Stores 1st Floor
TEL: 046-874-7179



Restaurant LAUNA

レストラン LAUNA (ラウナ)



- Yokosuka Kaigun Curry, milk and salad

Walk 10 minutes from Yokosuka-Chūō Station or Shioiri Station.
Meal Ticket usage hours:
11:00 a.m. - last order 8:00 p.m.
Closed: Mondays, 1st and 3rd Tuesdays (open if it is a holiday closed the following day, but may be other special Closures).
1-15-11 Hon-cho, Yokosuka-shi, Kanagawa
TEL: 046-854-5688



Curry Restaurant WOOD ISLAND

ウッドアイランドカレーレストラン



- Yokosuka Kaigun Curry, milk and salad

11 minutes' walk from Yokosuka-Chūō Station.
Meal Ticket usage hours:
11:30 a.m. - last order 6:00 p.m.
(Closes early if ingredients run out)
Closed: Tuesdays and Wednesdays (Open if it is a holiday)
1-4 Odaki-cho, Yokosuka-shi, Kanagawa
Next to the back gate of the U.S. Naval Base
TEL: 046-827-4790



Yokosuka Kaigun Curry Honpo

横須賀海軍カレー本舗



- Yokosuka Kaigun Curry (special beef or special chicken), milk, salad, chutney and coffee

2 minutes' walk from Yokosuka-Chūō Station.
Meal Ticket usage hours: Weekdays 11:00 a.m. - last order 3:30 p.m., (Weekends and holidays last order is 7:30 p.m.)
Closed: January 2nd and 3rd YY Port Yokosuka 1-11-18 Wakamatsu-cho, Yokosuka-shi, Kanagawa
TEL: 046-829-1229



HONEY BEE Yokosuka Port Market Store

HONEY BEE よこすかポートマーケット店



- Yokosuka Kaigun Curry, salad, milk and potato chips (topping)

11 minute walk from Yokosuka-Chūō Station
Meal Ticket usage hours:
10:00 a.m. - last order 7:45 p.m.
Closed: January 1st and 2nd, Port Market Closing Days
Inside Yokosuka Port Market, 6 Shinkocho, Yokosuka City Kanagawa



Sarushima Oceans Kitchen

猿島オーシャンズキッチン



- Yokosuka Kaigun Curry, milk and Yokosuka Pride Potato

To Mikasa Terminal, walk 15 minutes from Yokosuka-Chūō Station. Or, from JR Yokosuka Station, ride the Keihin Kyuko Bus Mikasa Junkan Route, and get off at "Mikasa Kouen". From Mikasa Terminal, 10 minutes on the Sarushima Island Cruise.
Meal Ticket usage hours:
[Summer season] 11:00 a.m. - last order 4:00 p.m., [Winter season] 11:00 a.m. - last order 3:00 p.m.
Closed on days when the Sarushima Island Cruise is closed.
1 Sarushima, Yokosuka-shi, Kanagawa
TEL: 080-7938-1349



YOKOSUKA CHISAN CHISHO



local production for
local consumption

Tori-no-Su Yokosuka Honten

鳥の巣 横須賀本店



- Lunch** ● Sashimi (raw fish) platter with 3 types of local fish, tempura platter, savory steamed egg custard, and pickled vegetables, dessert (free refills of rice)
- Dinner** ● Jizakana Kaiseki Set (local fish banquet set)
● Sashimi (raw fish), grilled fish, simmered fish, and salad



Walk 3 minutes from Yokosuka-Chuo Station.
Meal Ticket usage hours: Lunch: 11:30 a.m. - last order 2:00 p.m. Dinner: 4:30 p.m. - last order 10:00 p.m.
Closed: Sundays and Year-end and New Year's holidays.
1-2 Wakamatsu-cho, Yokosuka-shi, Kanagawa
2nd/3rd floors of the Hitomoto Building
TEL: 046-825-0533
*Menu contents vary depending on the season and inventory.
Next to the back gate of the U.S. Naval Base
*Cannot be used with other free service, discounts, or coupons.

Piacere PIZZA&WINE

Piacere PIZZA&WINE



- Pasta or pizza, salad, mini dessert, and soft drink, or alcoholic beverage of your choice



Walk 2 minutes from Yokosuka-Chūō Station.
Meal Ticket usage hours:
Lunch: 11:00 a.m. - last order 2:00 p.m.
Closed:
Year-end and New Year's holidays
1-1 Wakamatsu-cho, Yokosuka-shi, Kanagawa
TEL: 046-874-5967

One Drop Cafe

one drop cafe



One Drop Veggie Plate (with rice and miso soup)

- Vegetables used vary depending on inventory.



Walk 3 minutes from Shiori station.
Meal Ticket usage hours:
11:30 a.m. - last order 2:30 p.m.
Closed: Mondays and Tuesdays
3-11 Hon-cho, Yokosuka-shi, Kanagawa
TEL: 046-845-6126

Hisago Sushi, Yokosuka Chuo Store

ひさご寿司 横須賀中央店



Enjoy Ticket Special Set

- 10 pieces of nigiri sushi, soup, [first-come, first-served] with steamed egg custard *If steamed egg custard is not available, a small side dish will be served instead.



1 minute walk from Yokosuka-Chūō Station
Meal Ticket usage hours:
11:00 a.m. - last order 9:00 p.m.
Closed: Mondays (open if it is a holiday, closed the following day)
2nd floor Miura Plaza Building, 2-7 Wakamatsucho, Yokosuka City
TEL: 046-884-8584
Next to the back gate of the U.S. Naval Base

Yokosuka Beer

横須賀ビール



Miura Hanto Marukajiri (Eating Whole) Plate :

- Daily special with meat, fish, and vegetables
● 1 pint (473 milliliters) of 1 type of Yokosuka Beer



Walk 8 minutes from Shiori Station or Yokosuka-Chūō Station
Meal Ticket usage hours:
Weekdays 11:00 a.m. - last order 2:30 p.m., 5:00 p.m. - last order 9:00 p.m., Weekends and Holidays 11:00 a.m. - last order 9:00 p.m.
Closed: Lunch time on 2nd Wednesday each month (and some other special days).
1-23 Odaki-cho, Yokosuka-shi, Kanagawa
TEL: 046-874-8588

Agattoko

あがつとこ



- Miura Zukushi Don (seafood rice ball, served with miso soup)



11 minute walk from Yokosuka-Chūō Station
Meal Ticket usage hours:
10:00 a.m. - last order 7:30 p.m.
Closed when Port Market is closed
Inside Yokosuka Port Market,
6 Shinkocho, Yokosuka City
TEL: 046-874-6462

Meat Dining Koshin Farm

ミートダイニング コーシンファーム



- Japanese Black Cattle Yakniku Bowl, soup, Miura beef croquette, and soft drink



Walk 5 minutes from Shioiri Station
Meal Ticket usage hours:
11:00 a.m. - last order 8:30 p.m.
Open all year round.
2-1-12 Hon-cho, Yokosuka-shi, Kanagawa
Coaska Bayside Stores 2nd floor food court
TEL: 046-829-2939

Restaurant Materia

レストラン マテリア



- Choice of pizza and drink set



11 minute walk from Yokosuka-Chūō Station
Meal Ticket usage hours:
10:00 a.m. - last order 7:00 p.m.
Closed when Port Market is closed
Inside Yokosuka Port Market,
6 Shinkocho, Yokosuka City
TEL: 046-823-7388

Seafood Cuisine Funaosa

海鮮料理 船主



- Ryoshi Makanai Don (seafood rice bowl, served with miso soup, sea bream soup)

11 minute walk from Yokosuka-Chūō Station

Meal Ticket usage hours:
10:00 a.m. - last order 7:00 p.m.

Closed irregularly, closed when Port Market is closed

Inside Yokosuka Port Market,
6 Shinkocho, Yokosuka City, Kanagawa
TEL:046-828-6121



BUOSCANO.

BUOSCANO.



Lasagna Set

- Lasagna (choose from Hayama beef or seafood), soup (choose from 3 kinds), and fries

11 minute walk from Yokosuka-Chūō Station

Meal Ticket usage hours:
10:00 a.m. - last order 7:30 p.m.

Closed when Port Market is closed

Inside Yokosuka Port Market,
6 Shinkocho, Yokosuka City,
Kanagawa



Kappo Ryokan Tokyo Wan

割烹旅館 東京湾



Fried or simmered gold horse mackerel, small side dish, rice, soup and pickled vegetables

From Maborikaigan Station, ride the Keihin Kyuko Bus and walk 1 minute from "Ise-cho" stop.

Meal Ticket usage hours:
11:00 a.m. - last order 2:30 p.m.

Closed: Tuesdays (open if It is a holiday)
1-2-19 Hashirimizu, Yokosuka-shi, Kanagawa
TEL:046-841-0133

*Menu contents vary depending on the season and inventory.



Kaneyo Shokudo

かねよ食堂



Lunch set of your choice

- Choose from "roast local fish", meat dishes, ethnic dishes, pizza, or curry etc

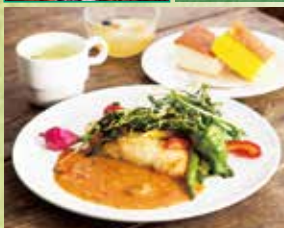
From Maborikaigan Station, ride the Keihin Kyuko Bus and walk 5 minutes from "Ise-cho" stop.

Meal Ticket usage hours:11:00 a.m. - last order 3:00 p.m. (Lunch time closing time may change depending on the season.)

Closed: Closed on Mondays (open if it is a holiday), and some other special days.

1-6-4 Hashirimizu, Yokosuka-shi, Kanagawa
TEL:046-841-9881

*Reservations are required as part of efforts to prevent the spread of COVID-19 (reservations can be made the same day)



Coffee and Wine Restaurant Restore, Kannonzaki Store

コーヒーとワインのお店 レストラン 観音崎店



Choice of Lunch Plate

- Choose from:
- Grilled salad plate with seasonal Yokosuka Miura vegetables
 - Fried soybean meat plate

From Uraga station, ride the Keihin Kyuko Bus and walk 8 minutes from "Koshigoe stop", or from Maborikaigan Station, ride the Keihin Kyuko Bus and walk 10 minutes from "Kannonzaki stop".

Meal Ticket usage hours:11:00 a.m. - last order 2:00 p.m.
Closed: Mondays (open if it is a holiday, closed the following day)

4-1128 Kamoi, Yokosuka City, Kanagawa
TEL:080-1308-2282



Kitahama Sushi Kannonzaki Store

北浜寿司 観音崎店



- 10 pieces of sushi made with local fish, soup, and savory steamed egg custard (in autumn and winter) or onsen tamago (egg slow-boiled so that the yolk is hard but the white is still soft)

From Uraga Station, ride the Keihin Kyuko Bus and walk 1 minute from "Hatta" stop.

Meal Ticket usage hours:11:30 a.m. - last order 1:30 p.m.*Restaurant closes when foods sell out.

Closed: Wednesdays (open if it is a holiday, but may be other special Closures).

3-85-5 Kamoi, Yokosuka-shi, Kanagawa
TEL:046-844-2383



Kamotsuru

鴨鶴



Your choice of kamameshi (rice, meat, and vegetable dish served in a small pot) and jizakana sashimi (local raw fish), miso soup, and pickled vegetables

From Uraga Station, ride the Keihin Kyuko Bus and walk 1 minute from "Kamoi".

Meal Ticket usage hours:
11:30 a.m. - last order 1:45 p.m.

Closed: Wednesdays (open if It is a holiday, but may be other special Closures).

3-6-3 Kamoi, Yokosuka-shi, Kanagawa
TEL:046-841-0731



Cool Clan URAGA

Cool Clan URAGA



Your choice of special set

- Choose from Uraga Vegetable Gochiso Salad Plate, 5 types of set meal, and 4 types of curry
- Served with soup, drink, and sherbert or ice cream

Walk 2 minutes from Uraga Station.

Meal Ticket usage hours:
11:00 a.m. - last order 8:15 p.m.

Closed: Wednesdays
1-8-3 Uraga, Yokosuka-shi, Kanagawa
TEL:046-845-9530



Hisago Sushi, Main Store

ひさご寿司 本店



Enjoy Ticket Special Set

- 10 pieces of nigiri sushi, soup, [first-come, first-served] with steamed egg custard *If steamed egg custard is not available, a small side dish will be served instead.

3 minute walk from Keikyū Kurihama Station

Meal Ticket usage hours:
11:00 a.m. - last order 9:30 p.m.

Closed: Tuesdays (open if it is a holiday, closed the following day)

4-5-11 Kurihama, Yokosuka City, Kanagawa
TEL:046-835-0622



No. 2 Hisago Sushi

第二ひさご寿司



Mankitsu Ticket Special Set

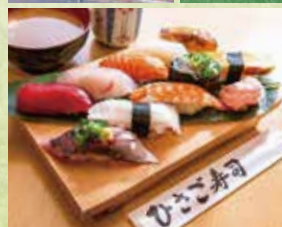
- 10 pieces of nigiri sushi, soup, [first-come, first-served] with steamed egg custard *If steamed egg custard is not available, a small side dish will be served instead.

5 minute walk from Keikyū Kurihama Station

Meal Ticket usage hours:
11:00 a.m. - last order 9:30 p.m.

Closed: Mondays (open if it is a holiday, closed the following day)

4-15-10 Kurihama, Yokosuka City, Kanagawa
TEL:046-837-1415



Ikesuya Umi

生簀屋 海



- Sashimi (raw fish), rice, miso soup, and pickled vegetables

From Keikyu Kurihama Station, ride the Keihin Kyuko Bus and walk 1 minute from "Ohama" stop.

Meal Ticket usage hours:

11:00 a.m. - last order 2:30 p.m.

Closed: Mondays to Thursdays

(open if It is a holiday)

8-9-1 Kurihama, Yokosuka-shi, Kanagawa

*Menu contents vary depending on the season and inventory.

TEL:046-833-3434



Ryoshi Ryori Yokosuka

漁師料理 よこすか



Misaki tuna sushi and tempura soba set (with 1 soft drink)

- With advance reservations, the soft drink can be changed to 1 alcoholic beverage

From Keikyu Kurihama Station, ride the Keihin Kyuko Bus and walk 2 minutes from "Tokyo Wan Ferry" stop.

Meal Ticket usage hours: Weekdays 10:00 a.m. -

last order 6:00 p.m., Weekends and Holidays 10:00

a.m. - last order 7:30 p.m. .Open all year round.

1st floor, 8-17-23 Kurihama, Yokosuka-shi,

Kanagawa

*Cannot be used with other free service, discounts, or coupons.

TEL:046-834-3431



Dessert & Cafe Blue Moon

Dessert&Cafe Blue Moon



- Your choice of a pancake meal or pancake dessert (with coffee or black tea)

Walk 9 minutes from Tsukuihama Station.

Meal Ticket usage hours: Tuesdays to

Fridays 10:00 a.m. - last order 5:00 p.m.,

Weekends 10:00 a.m. - last order 3:00

p.m., 5:00 p.m. - last order 8:00 p.m.,

Holidays 10:00 a.m. - last order 5:00 p.m.

Closed: Mondays and 2nd Tuesday each

month. (open if It is a holiday, and closed

the following day)

1-4-7 Tsukui, Yokosuka-shi, Kanagawa

TEL:046-847-2330

