



Coffee House Poem

コーヒーハウス ぼえむ

Miurakaigan Station



Cake and drink of your choice

Walk 1 minute from Miurakaigan Station.
Open Hours:9:00 a.m. - last order 7:00 p.m.,
Open all year round.

3130 Kamimiya, Minamishitaura-machi, Miura-shi, Kanagawa
*Can be exchanged for an original tote bag + coffee drip packs (x3) + original can badge.
*In the case of a child's ticket, can be exchanged for a drink of your choice.
TEL:046-888-5656



Temiyage Iroiro Miura Store

手土産いろいろ 三浦ストア

Miurakaigan Station



One jar of jam and one jar of pickles of your choice

Walk 3 minutes from Miurakaigan Station.
Open Hours:Weekdays11:00 a.m. - 6:00 p.m., Weekends and Holidays11:00 a.m. - 6:30 p.m., Closed on Wednesdays and Thursdays (open if it is a holiday).

3255 Kamimiya, Minamishitaura-machi, Miura-shi, Kanagawa
*With an adult ticket, can be exchanged for "1 jar of jam product and 1 jar of pickles". With a child's ticket, can be substituted for either 1 jar of jam or 1 jar of pickles.
TEL:046-874-4654



BAYSIDE SHARE (MIURAKAIGAN store)

BAYSIDE SHARE 三浦海岸

Miurakaigan Station



Choose 1 set: Specialty coffee and waffles (with ice cream) / craft beer and Taiwan style chicken wing side dish.

Walk 5 minutes from Miurakaigan Station.
Open Hours:10:00 a.m. - last order 6:00 p.m.,
Open all year round.

1443-1F Kamimiya, Minamishitaura-machi, Miura-shi, Kanagawa
*With a child's ticket, can be exchanged for a "mini waffle (with ice cream)".
TEL:046-827-7076



Miura Maholova Hot Spring (in Ocean Resort Hotel Maholova Minds Miura)

オーシャンリゾートホテル マホロバ・マインズ三浦

Miurakaigan Station



Day trip use of Miura Maholova Hot Spring bath (face towel included)

Walk 6 minutes from Miurakaigan Station.Open Hours:9:00 a.m. - last entry 10:30 a.m., 12:00 p.m. - last entry 2:00 p.m.. (Closed for cleaning from 11:00 a.m. to 12:00 p.m.) Closed:On the date of the August fireworks display. Closed during end of year and New Year holidays, and for maintenance during January.

3231 Kamimiya, Minamishitaura-machi, Miura-shi, Kanagawa
TEL:046-889-8900



BEACHEND CAFE

BEACHEND CAFE

Miurakaigan Station



Pudding, and your choice of coffee or tea

From Miurakaigan Station, ride the Keihin Kyuko Bus, and walk 1 minute from "Takanuki" stop.
Open Hours:8:00 a.m. - last entry 8:30 p.m.,
Closed on Tuesdays (open if it is a holiday, and closed the following day).

1089-18 Kikuna, Minamishitaura-machi, Miura-shi, Kanagawa
*With a child's ticket, can be exchanged for a "drink of your choice".
TEL:046-854-4484



Cliff Terrace

Cliff Terrace

Miurakaigan Station



Apr - Oct
Summer Cinnamon donuts, topped with ice cream with salt and caramel sauce, and your choice of coffee or black tea
Nov - Mar
Winter Cinnamon donuts topped with chocolate sauce, and your choice of coffee or black tea

From Miurakaigan Station, ride the Keihin Kyuko Bus, and walk 3 minutes from "Takanuki" stop. Open Hours:11:00 a.m. - 9:00 p.m.※Please make reservations for use after 7:00 p.m.. Closed on Mondays (open if it is a holiday, and closed the following day).

195-10 Kaneda, Minamishitaura-machi, Miura-shi, Kanagawa
*With a child's ticket, can be exchanged for a "drink of your choice".
TEL:046-888-5250



mito Café

mito café

Misakiguchi Station & Hikibashi



Your choice of drink and soufflé pancake, or Miura vegetable wrap sandwich (Miura handmade sausage or stewed cubes of tuna)

Walk 2 minutes from Misakiguchi Station.
Open Hours:9:00 a.m. - last order 4:00 p.m.,
Closed on Tuesdays (open if it is a holiday, and closed the following day.)

317-2 Mito, Hasse-machi, Miura-shi, Kanagawa
*With a child's ticket, can be exchanged for a kid's drink or a Sekiguchi Farm mini soft serve ice cream.
TEL:050-8885-2850



THE STAND BAR. | MISAKIGUCHI

THE STAND BAR.

MISAKIGUCHI

Misakiguchi Station & Hikibashi



Choose either one Miura wheat flour Cuban sandwich or one orange juice

Get off at Misakiguchi Station.
Open Hours:Weekdays12:00 p.m. - last order 7:00 p.m.,
Weekends and Holidays 11:00 a.m. - last order 7:00 p.m.. Closed Tuesdays.Irregular Holidays.

495 Shimomiyada, Hasse-machi, Miura-shi, Kanagawa
*With a child's ticket, can be exchanged for "Miura Wheat Flour Cuban Sandwich (quarter size)" or an orange juice (regular size)".
*Takeout is also available.
TEL:080-5816-0075



Ekimen Chaya (Noodles & Tea), Misakiguchi Store

えきめん茶屋 三崎口店

Misakiguchi Station & Hikibashi



Kajimen (noodles) book of tickets

Adjacent to Misakiguchi Station.
Open Hours:Weekdays 7:00 a.m. - 6:00 p.m.,
Weekends and Holidays 10:00 a.m. - 6:00 p.m.,
Closed during end of year and New Year holidays.

495 Shimomiyada, Hasse-machi, Miura-shi, Kanagawa
*Kaisuken (books of tickets) can be used at the Misakiguchi Store, Keiikyuu Kurihama Store, Yokosuka Chuo Store, Oppama Store, and Yokohama Store.
*With a child's ticket, can be exchanged for a "ticket for soba/udon (single item) of your choice", usable at all stores.
TEL:090-7187-8377



KEIKYU OPEN TOP BUS MIURA

KEIKYU OPEN TOP BUS 三浦

Misakiguchi Station & Hikibashi



KEIKYU OPEN TOP BUS MIURA, get on

Get off at Misakiguchi Station.
Ticket Use Time: Ticket exchange starts at 10:00 a.m. every day (last bus departs at 3:00 p.m.). Buses operate every day except the 2nd Sunday of the month and occasional closed days.

1st Bus	10:30 a.m.	One way course to Jogashima
2nd Bus	12:30 p.m.	One way course to Jogashima
3rd Bus	3:00 p.m.	Leisure course via Jogashima

495 Shimomiyada, Hasse-machi, Miura-shi, Kanagawa
TEL:03-5789-8686 or 045-225-9696



Miura Rent-a-Cycle

みうらレンタサイクル



Miura Rent-a-Cycle (electric bicycles) use for 3 hours

- Miurakaigan Station Port (Miura Sightseeing Bus)/ Ticket usable hours: 9:00 a.m. - 5:00 p.m., open all year round.(Excluding New Year's holidays) TEL:046-888-3821
- Misakiguchi Station Port (Misakiguchi Station Tourism Information Center)/ Ticket usable hours: 9:30 a.m. - 5:00 p.m., open all year round.(Excluding New Year's holidays) TEL: 046-888-0588
- Aburatsubo Port (Hotel Keiikyuu Aburatsubo Kanchoso)/ Ticket usable hours: 9:00 a.m. - 3:00 p.m., open all year round.(Excluding New Year's holidays) TEL:046-881-5211
- Urari Port (Urari)/ Ticket usable hours: 9:00 a.m. - 5:00 p.m., open all year round. (Excluding New Year's holidays) TEL:046-881-6721
- Jogashima Port (J's Fishing, on the sea fishing pond)/ Ticket usable hours: 9:00 a.m. - 4:00 p.m. Closed on Tuesdays (open if it is a holiday, and closed the following day.) and for end of year/new year holiday. *Only returns can be made at Jogashima Port.Rentals are not available at Jogashima Port. TEL:046-854-9891

Usable for 1 day's ride.



One Person Electric Vehicle my-mo

一人乗り電気自動車「my-mo(ミーモ)」



1 hour use of "my-mo" *Can be extended

- Miurakaigan Station Platform (Miura Sightseeing Bus)/ Ticket usable hours: 9:00 a.m. - 5:00 p.m., open all year round. (Excluding New Year's holidays) TEL:046-888-3821
 - Misakiguchi Station Platform Ticket usable hours: 8:30 a.m. - 5:30 p.m. Closed Holidays. Closed during 4/29 - 5/8, 12/29 - 1/5. TEL: 046-888-3392
 - Misaki Port Platform (Yamada saketen) / Ticket usable hours: 10:00 a.m. - 5:00 p.m., open all year round (Irregular Holidays). TEL:046-881-3341
- *Must have an ordinary vehicle license (that is valid in Japan). Always have your license with you, and follow traffic laws.



Miura Peninsula Southern Tip, Aburatsubo Hot Spring (Hotel Keikyū Aburatsubo Kanchoso)

赤子川温泉 三浦半島最南端 油壺温泉

Aburatsubo



Day trip use of hot spring salt bath with view of the sea (face towel included)

From Misakiguchi Station, ride the Keihin Kyuko Bus, and walk 4 minutes from "Aburatsubo Onsen" stop. Open Hours:11:00 a.m. - 10:00 p.m. (last entry 9:30 p.m.), open all year round (Open from 2:00 p.m. every Wednesday). 11:00 a.m.-4 p.m.(last entry 3:00 p.m.) 4:00 p.m. (last entry 3:00 p.m.) 1152 Koajiro, Misaki-machi, Miura-shi, Kanagawa TEL:046-881-5211



Hotel Keikyū Aburatsubo, Kanchoso

ホテル京急油壺 観潮荘

Aburatsubo



Live turban shells 500 grams (3 to 5 turban shells) or frozen dried horse mackerel (3 pieces), or 'Aburatsubo no Yu' bath salt 5 piece set*

From Misakiguchi Station, ride the Keihin Kyuko Bus, and walk 4 minutes from "Aburatsubo Onsen" stop. Open Hours:Live turban shells 10:00 a.m. - 3:30 p.m., frozen dried horse mackerel, 'Aburatsubo no Yu' bath salt 10:00 a.m. - 7:00 p.m., open all year round. 1152 Koajiro, Misaki-machi, Miura-shi, Kanagawa *A child's ticket can be exchanged for "live turban shells 250 grams (2 or 3 turban shells) or frozen dried horse mackerel (3 pieces), or 'Aburatsubo no Yu' bath salt 2 piece set". TEL:046-881-5211



Keikyū Aburatsubo Hot Spring Camp Park

京急油壺温泉キャンプパーク

Aburatsubo



Pony petting experience (10 minutes)

From Misakiguchi Station, ride the Keihin Kyuko Bus, and walk 5 minutes from "Aburatsubo Onsen" stop. Open Hours:10:00 a.m. - 4:00 p.m. (last entry 3:30 p.m.), Closed on Tuesdays (open if it is a holiday, and closed the following day.), Irregular Holidays. 1082 Koajiro, Misaki-machi, Miura-shi, Kanagawa *Can be exchanged for a horse cart ride on Saturdays, Sundays, and public holidays. *Can also be exchanged for a "VR experience", simulating a horse ride at the Horse Trekking Farm. TEL:046-854-5156



Kimieimaru

君栄丸

Misaki Port



Kama'age shirasu (scalded whitebait) pack and kama'age hijiki (scalded seaweed)

From Misakiguchi Station, ride the Keihin Kyuko Bus, and walk 5 minutes from "Misakiko" stop. Open Hours:Weekdays,Saturdays and Holidays 10:00 a.m. - 4:00 p.m., Sundays 6:00 a.m. - 3:00 p.m., Closed Wednesdays (open if it is a holiday). 5-245-2 Misaki, Miura-shi, Kanagawa *Can be exchanged for frozen "kama'age shirasu (scalded whitebait) and kama'age hijiki (scalded seaweed)". *A child's ticket can be exchanged for "small frozen negitoro (minced tuna with onions)". TEL:046-874-8710



Sightseeing Boat Niji'iro Sakana-go

水中観光船 にじいろさかな号

Misaki Port



Ride on the sightseeing boat Niji'iro Sakana-go

From Misakiguchi Station, ride the Keihin Kyuko Bus, and walk 3 minutes from "Misakiko" stop. Open all year round. Operating Hours:Begin taking tickets from 9:00 a.m. every day(last boat departs at 3:10 p.m.) *Operates temporary service at 16:00 between March and October 5-3-1 Misaki, Miura-shi, Kanagawa (Urari) *Check the website for operating status according to the weather. [Miura Umigyo Co., Ltd.] https://www.umigyo.co.jp TEL:046-881-6721



Misaki-Jogashima Ferry

三崎・城ヶ島渡船

Misaki Port



Ride on the Misaki-Jogashima Ferry (1 day free pass)

From Misakiguchi Station, ride the Keihin Kyuko Bus, and walk 3 minutes from "Misakiko" stop. Open Hours:10:00 a.m. - 4:00 p.m. (last ferry departs at 16:00), open all year round. 5-3-1 Misaki, Miura-shi, Kanagawa (Urari) *Check the website for operating status according to the weather. TEL:046-881-6721 [Miura Umigyo Co., Ltd.] https://www.umigyo.co.jp



Urari Marché Fish Hall (1st Floor)

うらりマルシェ さかな館 (1階)

Misaki Port

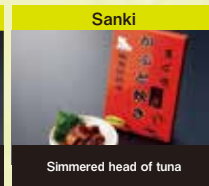
Choose from one of the souvenirs sold at the shop that are shown below.

From Misakiguchi Station, ride the Keihin Kyuko Bus, and walk 3 minutes from "Misakiko" stop. Open Hours:Monday to Saturday 9:00 a.m. - 5:00 p.m., Sundays 7:00a.m. - 5:00 p.m.※Vegetable Hall (2F) Open Hours:Weekdays10:00 a.m. - 5:00 p.m., Weekends and Holidays9:00 a.m. - 5:00 p.m., open all year round. 5-3-1 Misaki, Miura-shi, Kanagawa (Urari) *Photographs show items for which an adult ticket can be exchanged. Please inquire directly with the store regarding items for which a child's ticket can be exchanged. *Please understand that the item you request may be unavailable if stocks are empty. TEL:046-881-6721



Takanashi Nouen

Dressing of choice + giant radish candy



Sanki

Simmered head of tuna



Sanki

Tuna curry (room temp.) + Sakuttsu Koiwashi (Crunchily Japanese sardine)



Sanki

Tuna neck teriyaki (grilled over charcoal)



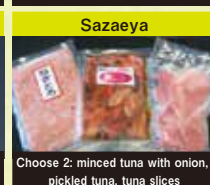
Ohata Sengyo

Deep fried tuna



Ohata Sengyo

Akamoku (dried seaweed)



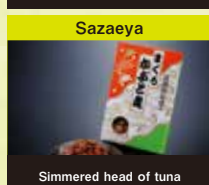
Sazaeya

Choose 2: minced tuna with onion, pickled tuna, tuna slices



Sazaeya

Dried fish set (founder x2, horse mackerel x3)



Sazaeya

Simmered head of tuna



Suzuki Suisan

Tuna neck x1 bag (800 grams)



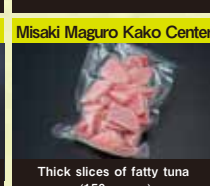
Minato Sakana Tonya

Minced tuna with onions



Kiyotsuki

Dried hijiki seaweed x1 bag + tuna croquette x1



Misaki Maguro Kako Center

Thick slices of fatty tuna (150 grams)



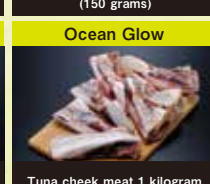
Misaki Maguro Kako Center

Japanese butterfish x2 + horse mackerel x3



Misaki Maguro Kako Center

Minced tuna with onions x2 packs



Ocean Glow

Tuna cheek meat 1 kilogram



Uo'oto

Swordfish neck x1 bag



Uo'oto

Shucked shrimp x1 pack



Uo'oto

Uo'oto original handcloth (x2 set)



Miura Chijo Sanpin Kako Group

Kaiso Bijin (noodles made with seaweed) x2 bags



Miura Chijo Sanpin Kako Group

Grilled tuna (300 grams)



Misaki Maguro Club

Mini fatty tuna buns (x6)



Yasai Kan (2nd floor)

Tuna ramen + Tokoroten (seaweed noodles) x2



Hayuka Sohonten, Misaki Port Store

羽床総本店 三崎港店

Misaki Port



Your choice of 3 pickled fish set! (Choose 3 fish from the Misaki Maguro Day Trip Ticket special products)

From Misakiguchi Station, ride the Keihin Kyuko Bus, and walk 3 minutes from "Misakiko" stop. Open Hours:9:00 a.m. - 5:00 p.m., open all year round. ※May be closed at new year holiday. 5-2-15 Misaki, Miura-shi, Kanagawa *A child's ticket can be exchanged for "Kajiki Oil Tsuke Basil Fum" (seaweed oil pickled fish with basil flavor). *Customers using a Ticket are eligible for free shipping on purchase of ¥3,000 or more (limited to addresses in Japan). TEL:046-881-2050



When using the "Miura & Misaki Omoide Ken", and purchasing products, special discounts are offered.



Yamada Saketen (Liquor Store)

山田酒店

Misaki Port



Misaki Port Ale Beer (x1 bottle)
Enjoy the rich aroma and hearty flavor of this craft beer, which is perfect as a souvenir or to drink while walking about the neighborhood.

From Misakiguchi Station, ride the Keihin Kyuko Bus, and get off at "Misakiko" stop.
Open Hours:10:00 a.m. - 7:00 p.m., open all year round. Irregular Holidays.

4-8-10 Misaki, Miura-shi, Kanagawa
TEL:046-881-3341



Misaki Donuts, Misaki Main Store

ミサキドーナツ 三崎本店

Misaki Port



Your choice of drink and donuts + original merchandise

From Misakiguchi Station, ride the Keihin Kyuko Bus, and walk 1 minute from "Misakiko" stop.
Open Hours:Weekdays 11:00 a.m. - 5:00 p.m., Weekends and Holidays 10:00 a.m. - 6:00 p.m., open all year round.

3-3-4 Misaki, Miura-shi, Kanagawa

*Original merchandise is not included when using a child's ticket.

*Takeout is available.

*Drinks do not include alcoholic beverages or limited time items.

TEL:046-895-2410



One free refill for customers who order hot coffee.



3204

3204

Misaki Port



Danish Con Gelato (wheat Danish and pistachio gelato sandwich) + your choice of drink

From Misakiguchi Station, ride the Keihin Kyuko Bus, and walk 5 minutes from "Misakiko" stop.
Open Hours:Friday to Sunday 11:00 a.m. - last order 5:00 p.m., Closed Monday to Thursday . Winter periods 11:00 a.m. - around sunset.

3-12-10 Misaki, Miura-shi, Kanagawa

*With a child's ticket, this change to Kid's Gelato (2 types possible) + drink of choice.

TEL:046-854-4642



Mitomi Dyed Goods Store

三富染物店

Misaki Port



Yamasho-san's tenugui hand cloth (choose 1 pattern)

From Misakiguchi Station, ride the Keihin Kyuko Bus, and walk 1 minute from "Hinode" stop.
Open Hours:8:00 a.m. - 8:00 p.m., Irregular Holidays.

1-10-9 Misaki, Miura-shi, Kanagawa

TEL:046-881-2791



Discount benefit provided with use of "Miura & Misaki Omoide Ken" and purchase of a tenugui hand cloth.



Kurobatei, Main Store

くろば亭 本店

Misaki Port



Choose one: Maguro Rayu (tuna chili oil), Maguro Miso (tuna miso), Togarashi Miso (pepper miso) (Can be taken home at room temperature)

From Misakiguchi Station, ride the Keihin Kyuko Bus, and walk 1 minute from "Hinode" stop.
Open Hours:11:00 a.m. - 7:00 p.m., Closed on Wednesdays (open if it is a holiday, and closed the following day.)※Closed once a month on Tuesdays.

1-9-11 Misaki, Miura-shi, Kanagawa

TEL:046-882-5637



Revival CAFE

Revival CAFE

Miyada



Choose one: Daily special pancake or Coffee jelly au lait + original merchandise

From Misakiguchi Station, ride the Keihin Kyuko Bus, and walk 1 minute from "Yahagi Iriguchi" stop. Or, walk 20 minutes from Misakiguchi Station.
Open Hours:14:00 - last order 18:00 Closed Thursdays (open if it is a holiday, and closed Wednesday.)

2650-3 Wada, Hasse-machi, Miura-shi, Kanagawa
TEL:046-845-6224

Omoide Ken + PLUS

Enjoy special experiences only possible in Miura and Misaki, with the Omoide Ken ticket plus additional fees.

*Additional fees can only be paid in cash.



*Please check the open hours and necessary time of each store, and make plans with leeway.



Tamadoro (Ceramic Workshop)

陶工房 たまどろ

Miurakaigan Station



Reservations required

Ceramics class experience (2 hours)

Make reservations here

Make reservations by 2:00 PM the previous day.
URL <https://miuracocoon.com/activities/A000018/>

Walk 10 minutes from Miurakaigan Station.
Open Hours:Morning Session 10:00 a.m. - 12:00 p.m., Afternoon Session 2:00 p.m. - 4:00 p.m., Night Session 7:00 p.m. - 9:00 p.m., open all year round.

989 Kamimiyada, Minamishitaura-machi, Miura-shi, Kanagawa
TEL:046-888-8415 CELLPHONE:090-4816-3688



+ ¥3,000 (adults)



+ ¥2,500 (child)



Umikaze Cycle

うみかぜサイクル

Miurakaigan Station



Reservations required

Hybrid bicycle rental (3 hours)

Make reservations here

URL <https://miuracocoon.com/activities/A000048/>

Hybrid bicycle + ¥1,000

Kid's hybrid bicycle + ¥1,000

Electric hybrid bicycle + ¥1,100

Road bicycle + ¥1,500

Walk 5 minutes from Miurakaigan Station.
Open Hours:9:00 a.m. - 3:00 p.m., Closed Wednesday. Irregular Holidays.

#102 Espoir Miurakaigan, 3316-4 Kamimiyada, Minamishitaura-machi, Miura-shi, Kanagawa
TEL:046-874-4945



S-RIDE

S-RIDE

Miurakaigan Station



Reservations required

SUP experience (standing up paddle board experience, with instruction)

Make reservations here

Make reservations by 5:00 PM of the day before your reservation day.
URL <https://miuracocoon.com/activities/A000040/>

Walk 10 minutes from Miurakaigan Station.
Open Hours:Morning Session:Starts at 10:00 a.m., Afternoon Session:Starts at 1:00 p.m., Irregular Holidays.
7-5 Kikuna, Minamishitaura-machi, Miura-shi, Kanagawa
TEL:080-4333-4172



+ ¥2,500 (adults)



BAYSIDE SHARE Miurakaigan

BAYSIDE SHARE 三浦海岸

Miurakaigan Station



+ ¥500 (adults)

+ ¥1,000 (child)

Use of share office (3 hours)

Walk 5 minutes from Miurakaigan Station.
Open Hours:10:00 a.m. - 6:30 p.m., open all year round.

1443-1F Kamimiyada, Minamishitaura-machi, Miura-shi, Kanagawa
TEL:046-827-7076



Mitomi Dyed Goods

三富染物店

Misaki Port



Reservations required

Fish flag dyeing experience

Make reservations here

Make reservations here
Ask about time when making your reservation.
URL <https://miuracocoon.com/activities/A000017/>

From Misakiguchi Station, ride the Keihin Kyuko Bus, and walk 1 minute from "Hinode" stop.
Open Hours:10:00 a.m. - 4:00 p.m., Irregular Holidays.

1-10-9 Misaki, Miura-shi, Kanagawa
TEL:046-881-2791



+ ¥2,500 (adults)



+ ¥3,000 (child)



Miura Resort Tuk Tuk

みうらリゾート トックトック

Walk 1 minute from Miurakaigan Station.
Open Hours:9:00 a.m. - 5:00 p.m., Irregular Holidays.

Miurakaigan Branch: 1486-2 Kamimiyada,
Minamishitaura-machi, Miura-shi, Kanagawa
Inside Miura Rent-a-Car
TEL:046-888-5003

Reservations
required

Miurakaigan
Area



Show your
ticket

Special Benefit (reservations required)

5% discount on Tuk Tuk experience
(2 hours or longer)

Make reservations here
URL <https://miuracocoon.com/activities/A000052/>
*Same day reservations possible if vehicles
are available.

Miurakaigan
Area

Reservations
required

Van Cruise (camping car rental)

Van Cruise(キャンピングカーレンタル)

Walk 3 minutes from Miurakaigan Station.
Open Hours:9:00 a.m. - 7:00 p.m., Irregular Holidays.
3257-6 Kamimiyada, Minamishitaura-machi,
Miura-shi, Kanagawa
TEL:050-5527-7250



Show your
ticket

Special Benefit (reservations required)

5% discount on camping car rental fee

Make reservations here
URL <https://miuracocoon.com/activities/A000094/>
*Please contact the store directly regarding
use fees.
*Same day reservations possible if vehicles
are available.

Miurakaigan
Area

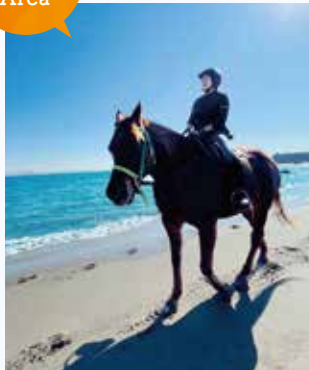
Reservations
required

Horse Trekking Farm Miurakaigan

ホーストレッキングファーム三浦海岸

Walk 10 minutes from Miurakaigan Station.
Open Hours:10:00 a.m. - 12:00 p.m. (Beach Swim
10:00 a.m. - 11:30 a.m.), 2:00 p.m. - 4:00 p.m. (Beach
Swim 2:00 p.m. - 3:30 p.m.), Closed Tuesday and 2nd
Wednesday of the month(open if it is a holiday).

1751-3 Kamimiyada, Minamishitaura-machi,
Miura-shi, Kanagawa
TEL:046-887-1088



Show your
ticket

Special Benefit (reservations required)

5% discount on horse trekking
experience
+ gift of special souvenir

Make reservations here
URL <https://miuracocoon.com/activities/A000010/>

KOAJIRO SUP Tours

KOAJIRO SUP Tours

From Misakiguchi Station, ride the Keihin Kyuko Bus,
and walk 10 minutes from "Aburatsubo Onsen" stop.
Open Hours:Morning Session 10:00 a.m. - 12:00 p.m.,
Afternoon Session 1:30 p.m. - 3:30 p.m.,Sunset
Session 4:30 p.m. - 6:00 p.m., open all year round.

1095-30 Koajiro, Misaki-machi, Miura-shi, Kanagawa
TEL:090-8302-4897

Reservations
required

Aburatsubo
Area



Show your
ticket

Special Benefit (reservations required)

On the Miura Koajiro Bay SUP tour fee,
¥300 discount when making reservation.

Make reservations here
URL <https://miuracocoon.com/activities/A000047/>
*Make reservations by 6:00 p.m. the day
before your tour.