

Fully enjoy Japan's downtown area, a must for any tourist!

Hostel opened in the Asakusa area

Directly accessible in approximately 30 minutes from Haneda Airport

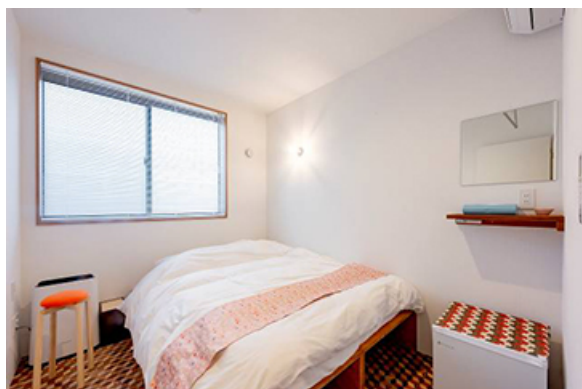


The plat hostel keikyu asakusa karin was opened in the Asakusa area on March 22, 2019 (Fri.). The Asakusa area is one of Tokyo's perennial tourism spots, with a range of places to see, including Sensoji Temple, Nakamise Street, and Tokyo Sky Tree. This new hostel has been opened 5 minutes' walk from Toei Asakusa Station [A18], the center of the Asakusa area.



The plat hostel provides high quality amenities and made-in-Japan beauty home electronics for guest use (*for deluxe double rooms only), providing small luxuries well suited for female guests while still being a hostel.

Travellers can reach Toei Asakusa Station [A18] in approximately 30 minutes with no transfers required on the Airport Limited Express from Haneda Airport International Terminal Station [KK16] on the Keikyu Line, making it perfect starting point for your Tokyo travels.



Rates

Posted on Internet reservation websites

plat hostel keikyu asakusa karin

- (1) Location 2-11-2 Higashi Komagata, Sumida-ku, Tokyo
- (2) Access 5 minute walk from Asakusa Station [A18] on the Toei Asakusa Line
7 minute walk from Honjo-azumabashi Station [A19] on the Toei Asakusa Line
- (3) Facilities Shared facilities (shower, toilet, powder room), Wi-Fi, view of Tokyo Sky Tree from rooftop, etc.
- (4) No. of guest rooms 12 rooms, 42 person capacity
- (5) Tel. no. 03-3622-3735 (Japanese and English)
- (6) Official FaceBook <https://www.facebook.com/Plat-hostel-keikyu-asakusa-karin-370685283519070>
- (7) Reservation method Make reservations via the following.
https://www.booking.com/hotel/jp/plat-hostel-keikyu.ja.html?label=fac419jc-1DCAso dUIScGxhdC1ob3N0ZWwta2Vpa3I1SBVYA2h1iAEBmAEVuaEGyAEM2AED6AEB-AEDiAIBqAIDuALTsMPkBcACAQ;sid=2852464a7f3bcb41ae01a94f63ff8c40;dist=0&keep_landing=1&sb_price_type=total&type=total&